

**FEB**  
2014

Otway NouriShed  
**Annual Ferguson  
Local Produce Market**  
Sunday 9 February  
Local produce and crafts market.  
Come early for a BBQ Breakfast.



**MAR**  
2014

Gellibrand River  
**Blues and Blueberry Festival**  
Saturday 1 March  
Market from 9am, Music 1pm ~ 6pm  
Leading Australian Blues Bands,  
Art, Craft and Produce Market.



**APOLLO BAY  
MUSIC FESTIVAL 2014**

Apollo Bay  
Foreshore  
Friday 28 FEB to  
Sunday 2 MAR  
Ticketed Event.

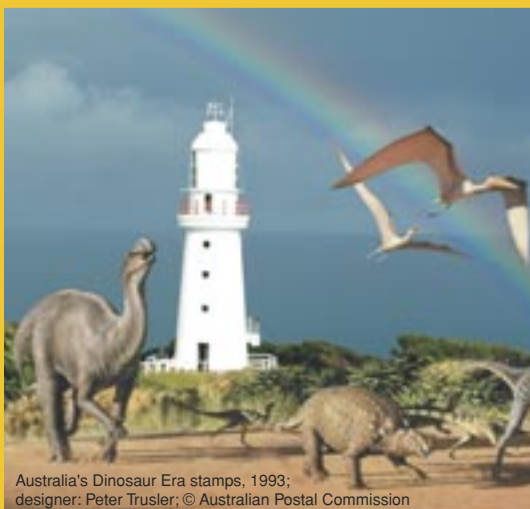


Old Beechy Rail Trail  
**16km Fun Run and  
7km Walk / Run**  
Sunday 16 March  
9:00am ~ 3:00pm  
A great day for the whole family.  
Register online prior to the event.

**APR**  
2014

Beech Forest  
**Anzac Day  
Commemoration**  
11am Friday 25 April  
Beech Forest Memorial,  
Cliff Young Drive, Beech Forest.

Cape Otway Lightstation  
**Dinosaurs in the Otways**  
Finishes 30 April  
Daily from 9am ~ 5pm  
Polar Dinosaur Exhibition.  
Last chance ends this month.



Australia's Dinosaur Era stamps, 1993;  
designer: Peter Trusler; © Australian Postal Commission

**MAY**  
2014

Glenaire / Lavers Hill  
**Gourmet Farmers Week**  
Saturday 3 to Saturday 10 May  
'Paddock to Plate' Gourmet Dinners featuring  
local produce and farm demonstrations.



Southern Otway Landcare Network  
**Fungi Workshop**  
Saturday 3 May  
10am ~ 4pm  
Site survey information session followed by  
field identification in the Otway forest. Bookings Essential.



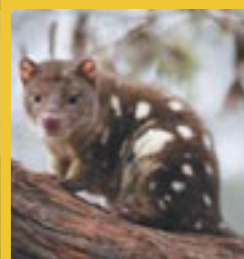
**JUN**  
2014

Forrest Otway  
**9th Annual Otway  
Soup Festival**  
Sunday 8 June  
Homemade soups, preserves, pickles,  
relishes, homebrew beers, wines and a wide  
range of free family entertainment.



**JUL**  
2014

Otway Fly Tree Top Adventures  
**National Tree Day**  
Sunday 27 July  
Take part in the 'Plant & Pledge' activities  
in the heart of the Otway Rainforest.



Otway Fly Tree Top Adventures  
**Wild Otway**  
July School Holidays  
Live interactions with native  
animals every day!



**AUG**  
2014

Cape Otway  
Lightstation  
**International  
Lighthouse  
Weekend**  
Fri 15, Sat 16 and  
Sun 17 August  
Explore Mainland  
Australia's oldest,  
surviving lighthouse  
as it presents special  
events all weekend.

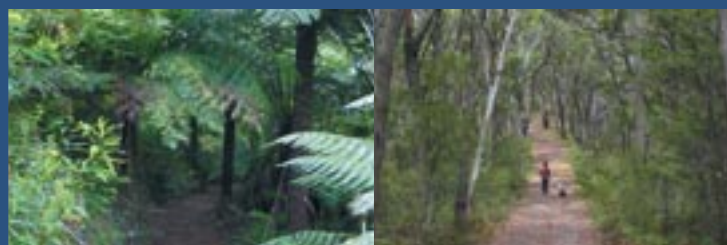


7 fabulous falls in 7 days  
**Wonderful Waterfalls**  
In August  
The perfect time to visit all the falls  
flowing at their fullest. Allow 3-7 days.  
All week, midweek and weekend  
accommodation deals available.



**SEP**  
2014

Spring into Glenaire  
**Glenaire Cottages Native  
Flora Walks**  
All September  
Explore spectacular private forest walks by  
arrangement during September. Call (03) 5237 9237.  
No quad or trail bikes permitted.



Gellibrand and Beech Forrest  
**Golden Gumboot  
Treasure Hunt**  
To be confirmed.  
Check website for details.

**What's happening in 2014**  
Visit the website for more details



Photographer Alan Carmichael

**OCT**  
2014

The Ridge Cafe  
**Degustation Dinner**  
Fri 24 & Sat 25 October  
Indulge your taste buds with a wondrous fare  
prepared from local and organic produce.  
Bookings Essential.



Go Walk Adventures  
**Great Ocean Walks**  
All October  
Exclusive accommodation and  
Great Ocean Walk packages.

**NOV**  
2014

Lavers Hill Town Hall  
**Vintage Market**  
Sunday 2 November  
10am ~ 3pm  
Browse an eclectic collection of crafts, arts,  
vintage items, books, handmade candles, soaps  
and jewellery or try a food stall treat.



Gellibrand Hall Fund Raiser  
**Giant Gellibrand Auction**  
Sunday 9 November  
from 10.00am at Gellibrand Reserve.  
Buyers & Sellers Market + Motorcycle Swap Meet.  
You'll be surprised by what you can find,  
Food and refreshments available.

**DEC**  
2014

CastleAire B&B  
**Berry Berry B&B**  
All December  
Start every day with an  
Otway Berry, Berry Breakfast,  
simply scrumptious!



Apollo Bay  
**Foreshore  
Fireworks**  
31 December  
Main display at 10pm  
and one at midnight.



Something new around every corner  
**Otway Country to Coast**  
Tourism Association Inc  
[www.otwaycountrytocoast.com.au](http://www.otwaycountrytocoast.com.au)





Otway Country to Coast Tourism Inc. cannot be held liable for human error and omissions which may occur in this publication. The publisher will not accept responsibility for any misleading or deceptive material. GSDM 11261 JUNE 13.

#### ACCOMMODATION CARAVAN ~ CAMPING ~ BACKPACKER

- 1 Bimbi Park Camping under the Koalas**  
90 Manna Gum Drive, Cape Otway ☎ (03) 5237 9246  
Cabins, camping and bunkrooms.  
[www.bimbipark.com.au](http://www.bimbipark.com.au)
- 2 Otway Tourist Park** 🐾  
25 Main Road, Gellibrand River ☎ (03) 5235 8357  
Villas, Cabins, Park Units, En-suited Sites, powered and camping sites. [www.otwaytouristpark.com](http://www.otwaytouristpark.com)
- 35 Lavers Hill Roadhouse**  
53-58 Great Ocean Road, Lavers Hill ☎ (03) 5237 3251  
New units with ensuites, caravan park and camping.

#### ACCOMMODATION B&B ~ GUEST HOUSE ~ MOTEL ~ LODGES

- 3 Aire Valley Guest House**  
2590 Great Ocean Road, Horden Vale  
☎ (03) 5237 9223 Luxury, style & fine food.  
[www.airevalleyguesthouse.com.au](http://www.airevalleyguesthouse.com.au)
- 4 Blue Johanna Cottages & B&B** 🐾  
Blue Johanna Road, Johanna ☎ (03) 5237 4224  
Queen size with ensuite (1 with spa).
- 5 Melba Gully Cottage Flower Farm B&B**  
Melba Gully Road, Lavers Hill ☎ (03) 5237 3208  
Boutique B&B, Queen size rooms with ensuites.  
[www.melbagullygardenbandb.com.au](http://www.melbagullygardenbandb.com.au)
- 7 Otway Junction Motor Inn & Bistro**  
Great Ocean Road, Lavers Hill ☎ (03) 5237 3295  
Single, double & family motel units.
- 8 Bothfeet walking lodge & walking tours**  
70 Stafford Road, Johanna ☎ 1300 767 416. [4★]  
Ecologe onsite chef. Guided & self guided walks.
- 9 Great Ocean Ecologe**  
635 Cape Otway Lighthouse Road, Cape Otway  
☎ (03) 5237 9297. The ultimate eco experience.  
[www.greatoceanecologe.com](http://www.greatoceanecologe.com)
- 10 Cape Otway Ocean Lodge**  
Bracks Access, Cape Otway ☎ (03) 5237 9272  
Groups: 10 - 50 people. Catered or Self Catered.  
Sole Occupancy.
- 21 CastleAire B&B**  
Great Ocean Road, Glenaire ☎ (03) 5237 9225  
Luxury hosted accommodation for max. 5 people,  
3 rooms, two with ensuite. [www.castleaire.net](http://www.castleaire.net)
- 26 The Beechy Hotel**  
Main Road, Beech Forest ☎ (03) 5235 9220  
Family units with ensuites.  
[www.thebeechyhotel.com.au](http://www.thebeechyhotel.com.au)

#### ACCOMMODATION FULLY SELF CONTAINED

- 4 Blue Johanna Cottages & B&B** 🐾  
Blue Johanna Road, Johanna ☎ (03) 5237 4224  
One bedroom cottages – spa, breakfast basket.
- 6 Great Ocean Walk Retreat**  
3229 Great Ocean Road, Glenaire ☎ (03) 5237 9253  
1, 2 & 3 bedroom units / villas. Sleeps up to 14  
[www.greatoceanwalkretreat.com.au](http://www.greatoceanwalkretreat.com.au)
- 11 Blue Johanna House**  
575 Blue Johanna Road, Johanna ☎ (03) 5237 1098  
5 Bedroom architecturally-designed home.  
[www.holidaygor.com.au](http://www.holidaygor.com.au)
- 12 The Boomerangs**  
3815 Great Ocean Road, Johanna ☎ (03) 5237 4213  
Two bedroom boomerang shaped residences. Spas,  
wood fires, ocean views. [www.theboomerangs.com](http://www.theboomerangs.com)
- 13 Cape Otway Lightstation**  
Cape Otway Lighthouse Road, Cape Otway  
☎ (03) 5237 9240 Lighthouse Keepers residence.  
Great for groups or couples.
- 14 Fauna Australia Wildlife Retreat**  
5040 Colac-Lavers Hill Road, Lavers Hill  
☎ (03) 5237 3234 Family units & spa cottage.  
Friendly Aussie animals. [www.faunaaustralia.com.au](http://www.faunaaustralia.com.au)
- 15 Glenaire Cottages** 🐾  
3440 Great Ocean Road, Glenaire ☎ (03) 5237 9237  
Wood fires, ocean views, air conditioned, spas and  
private forest walks [www.glenairecottages.com](http://www.glenairecottages.com)
- 16 Johanna River Farm & Cottages** 🐾  
[3.5★]&[4★] 420 Blue Johanna Road, Johanna  
☎ (03) 5237 4219. 1 & 2 bedroom, ocean & farm  
views, wood fires. [www.johanna.com.au](http://www.johanna.com.au)
- 17 Johanna Seaside Cottages** 🐾 [4★]&[4.5★]  
395 Red Johanna Road, Johanna ☎ (03) 5237 4242  
Indoor heated pool, ocean views, wood fires.  
[www.johannaseaside.com.au](http://www.johannaseaside.com.au)
- 18 Muxy's Place** 🐾  
90 Red Johanna Road, Johanna ☎ 0411 711 001  
3 bedroom, 2 bathroom, Family friendly. Sleeps 8-10.  
[www.muxys-place.com.au](http://www.muxys-place.com.au)
- 19 Parkwood Cottage** 🐾  
Great Ocean Road, Lavers Hill ☎ (03) 5237 3181  
1 bedroom secluded cottage with spa, wood fire.  
[www.parkwoodcottage.com](http://www.parkwoodcottage.com)
- 20 Shearwater Cottages Cape Otway** 🐾  
760 Lighthouse Road, Cape Otway ☎ (03) 5237 9290.  
1 & 2 bedroom. Ocean and Otway views  
[www.shearwatercottages.com](http://www.shearwatercottages.com)
- 28 Iona Seaview Farm**  
235 Blue Johanna Road, Johanna ☎ (03) 5237 4254  
Two bedroom cottages, Accommodates 2 - 6 people.  
[www.ionaseaview.info](http://www.ionaseaview.info)

- 29 Rotten Point House**  
Evans Track, Johanna ☎ (03) 52371098. Magnificent  
architectural house with outstanding ocean views.  
[www.holidaygor.com.au](http://www.holidaygor.com.au)
- 30 Sea Eagle Retreat**  
55 Bracks Access, Cape Otway ☎ (03) 5237 6921  
5 bedroom house, indoor heated pool.  
[www.seaeagleretreat.com.au](http://www.seaeagleretreat.com.au)
- 31 Wombalano Country Retreat**  
Great Ocean Road, Yuulong ☎ (03) 5237 5264  
3 bedroom farmhouse. wombalanocr@bigpond.com  
[www.wombalano.com.au](http://www.wombalano.com.au)
- 36 Johanna Bluegum Holiday Cabins** 🐾  
Blue Johanna Road, Johanna ☎ (03) 52338 411  
M: 0427 519 230. 2 & 1 bedroom cabins. Spas,  
wood/gas fires, ocean/valley views. 1 km to beach  
[www.johannabluegumholidaycabins.com.au](http://www.johannabluegumholidaycabins.com.au)
- 37 Cape Otway Cottages** 🐾  
615 Horden Vale Rd, Horden Vale ☎ (03) 5237 9256  
M: 0457 706 244. Three studio style Cottages spa & fire.  
Luxury 'Dunes' Homestead, 3 bedrooms, sleeps 6-8  
[www.capeotwaycottages.com.au](http://www.capeotwaycottages.com.au)

#### ATTRACTIONS

- 1 Bimbi Park – Trail Rides/Horse Riding**  
Manna Gum Drive, Cape Otway ☎ (03) 237 9151  
Bookings essential. [www.bimbipark.com.au](http://www.bimbipark.com.au)
- 5 Melba Gully Open Garden**  
Melba Gully Road, Lavers Hill ☎ (03) 5237 3208  
Stroll through a cottage style garden set on 20 acres.  
Garden art. Something to see in every season.
- 13 Cape Otway Lightstation**  
Cape Otway Lighthouse Road, Cape Otway  
☎ (03) 5237 9240. Climb the tower, historical sites  
and relics. Café. [www.lightstation.com](http://www.lightstation.com)
- 22 Otway Fly Treetop Adventures**  
Phillips Track, Beech Forest ☎ 1800 300 477  
The longest & highest canopy walk of its kind in the  
world and Victoria's first Zip Line Tour adventure.  
[www.otwayfly.com.au](http://www.otwayfly.com.au)
- 23 Apostles Helicopters**  
12 Apostles, Princetown ☎ (03) 5598 8283  
[www.12apostleshelicopters.com.au](http://www.12apostleshelicopters.com.au)
- 24 Calma Candles**  
27 Great Ocean Road, Lavers Hill ☎ 0400 311 220  
Handcrafted Essential Oil Candles and other aromatic  
goodness. Pop up workshop.
- 33 Great Ocean Road Wildlife Park**  
29 The Boulevard, Princetown ☎ (03) 5237 5262  
Open daily from 9am-8pm. New dingo petting area.  
[www.greatoceanroadwildlifepark.com](http://www.greatoceanroadwildlifepark.com)
- Cape Otway Shipwreck Tours**  
Tours daily ☎ 0417 983 985  
Captivating history and wildlife. Bookings essential  
[www.greatoceanwalk.asn.au/marktours/](http://www.greatoceanwalk.asn.au/marktours/)

#### RESTAURANTS & SUPPLIES

- 7 Otway Junction Motel and Bistro**  
Great Ocean Road, Lavers Hill ☎ (03) 5237 3295  
Open 7 days a week – Licenced
- 25 Otway Nourished**  
3810 Colac-Lavers Hill Road, Ferguson  
☎ (03) 5235 9226. Café, general store, local arts and  
crafts. [www.otwaynourished.com](http://www.otwaynourished.com)
- 26 The Beechy Hotel**  
Main Road, Beech Forest ☎ (03) 5235 9220  
Lunch and evening meals – Open 7 days a week  
[www.thebeechyhotel.com.au](http://www.thebeechyhotel.com.au)
- 27 The Ridge Organic Food Store and Café**  
20 Gardner Street, Beech Forest ☎ (03) 5235 9273  
Open 8:30am - 4:00pm. Breakfast and lunch  
[www.theridgecafe.com](http://www.theridgecafe.com)
- 32 The Shoppe**  
Great Ocean Road, Lavers Hill ☎ (03) 5237 3276  
Open 8am - 4pm daily. Great coffee and bakery.

- 34 Yatzie's Café**  
Great Ocean Road, Lavers Hill ☎ (03) 5237 3215  
General store, petrol, ice, breakfast, lunch, takeaway.  
Licenced

- 35 Lavers Hill Roadhouse**  
53-58 Great Ocean Road, Lavers Hill  
☎ (03) 5237 3251 Open 7 days, fully licensed bistro-  
lunch and evening meals, eat-in or takeaway. Fuel, ice  
and sundries.

#### SPECIALITY SERVICES

- AUSWALK Walking Holidays**  
Great Ocean Walk ☎ (03) 5356 4971 Accommodated,  
guided walking holidays. [www.auswalk.com.au](http://www.auswalk.com.au)
- GOWALK Adventures**  
Self Guided Walkers ☎ (03) 5237 4219  
Walking itinerary to suit your needs. Catering,  
transport, luggage, private accommodation – singles  
to small groups. [www.gowalkadventures.com](http://www.gowalkadventures.com)
- Great Ocean Road Shuttle**  
☎ (03) 5237 9278 – Mobile: 0428 379 278  
Full logistical support for your Great Ocean Walk.  
[gorshuttle@bordnet.net.au](mailto:gorshuttle@bordnet.net.au)
- Holiday Great Ocean Road** 🐾  
☎ (03) 5237 1098. Specialised property management  
and accommodation booking service. Fully self  
contained houses. [www.holidaygor.com.au](http://www.holidaygor.com.au)

🐾 Indicates Pet Friendly

[www.otwaycountryto coast.com.au](http://www.otwaycountryto coast.com.au)



Something new around every corner  
**Otway Country to Coast**  
Tourism Association Inc